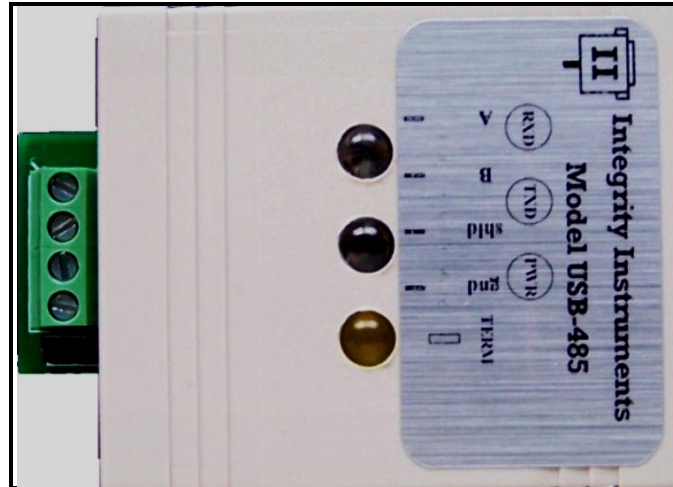




Integrity Instruments



Model: USB-485

USB to RS-485 converter

Integrity Instruments, Inc.
PO Box 451
2642 20th Ave SW
Pine River, MN 56474 USA

Order: 800-450-2001
Tech: 218-587-3120
Fax: 218-587-3414
Web: www.integrityusa.com and www.rs-485.com

USB-485 User Manual

Copyright

Copyright © 2011-2012, Integrity Instruments, Inc. All rights reserved.

No part of this manual may be reproduced, copied, or transmitted in any form or by any means without the prior written permission of Integrity Instruments, Inc.

Acknowledgements

Microsoft Windows is a registered trademark of Microsoft Corporation.

All other trademarks and/or registered trademarks are the property of their respective owners.

Warranty

Integrity Instruments warranties select products against defective workmanship and components for the life of the unit. Integrity Instruments agrees to repair or replace, at its sole discretion, a defective product if returned to Integrity Instruments with proof of purchase. Products that have been misused, improperly applied, or subject to adverse operating conditions fall beyond the scope of defective workmanship and are not covered by this warranty.

Document: USB-485 User Manual
Filename: USB-485 User Manual (1-6-2011).docx
Revision: 1.00
Date: January 6, 2012

USB-485 User Manual

Table of Contents

1	Introduction	1
2	Driver Installation.....	1
2.1	Windows 7 Driver Installation.....	1
2.2	Windows XP Driver Installation	2
2.2.1	Windows XP Manual Driver Installation	4
2.3	Increasing Comport Numbers (Windows)	4
2.4	Other Operating Systems (Linux, Mac OS, Embedded Windows, Windows, etc.)	6
3	Operation	6
3.1	USB Cable	6
3.2	RS-485 Wiring.....	7
3.3	RS-485 Cable	7
3.4	LED Indicators	8
3.5	Termination Resistor.....	8
3.6	Using EZTerm	9
4	Specifications	10
4.1	Electrical Protection Measures	10
5	Comport Number Registry Fix.....	11

Figures

Figure 1: USB-485 Converter	1
Figure 2: Windows 7 Automatic Driver Install	2
Figure 3: Windows 7 Driver Installation Completed.....	2
Figure 4: Windows XP FTDI Setup EXE Launch.....	3
Figure 5: FTDI setup executable MS-DOS window.....	3
Figure 6: Windows XP New Hardware Wizard.....	4
Figure 7: Increasing comport numbers (COM6)	5
Figure 8: Uninstall comport to release assigned number	6
Figure 9: RS-485 Connection Terminals.....	7
Figure 10: LED indicators (left to right) RX / TX / PWR	8
Figure 11: Termination resistor jumper (installed).....	9
Figure 12: EZTerm used with USB-485 protocol converter	9
Figure 13: REGEDIT "COM Name Arbiter" Key Name	11
Figure 14: ComDB value COM1, COM3, COM4 and COM6 are allocated.....	12
Figure 15: ComDB value only COM1 remains (bit0)	12
Figure 16: Corrected "COM Name Arbiter" with COM1 remaining.....	13

Tables

Table 1: LED Indicators.....	8
Table 2: USB-485 Converter Specifications.....	10
Table 3: USB-485 Electrical Protection	10

1 Introduction

The Integrity Instruments USB-485 is a fully automatic USB to RS-485 protocol converter. It is a USB 2.0 compliant USB Full Speed device (12 Mbps) and is capable of handling multi-drop RS-485 serial communications from 300 baud to 3M baud. The USB-485 is robust and reliable, yet easy to use.

The USB-485 converter behaves exactly like a standard RS-232 UART comport device in all supported operating systems, so your legacy comport software stays exactly the same. In most cases the USB-485 converter is a simple drop-in replacement for your current RS-232 UART interface.

A new virtual UART comport is created when the USB-485 is plugged into the computer. In Windows this is often COM3 and in Linux this is often /dev/ttyUSB0 (the exact ordinal number *x* of COM*x* and /dev/ttyUSB*x* depends on the system configuration).

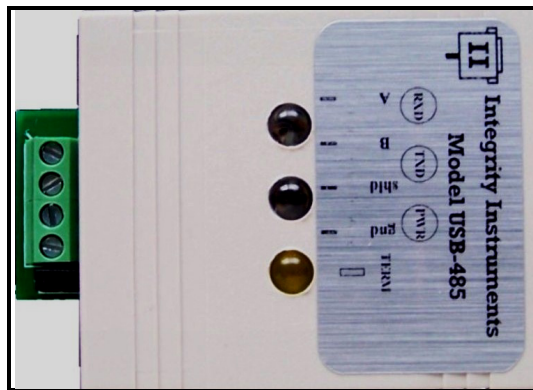


Figure 1: USB-485 Converter

More details about the operating parameters and specifications can be found in the [Specifications](#) section later in this document.

2 Driver Installation

The Integrity Instruments USB-485 converter uses the FTDI FT232R chip which has excellent support for USB device drivers in most common operating systems. All Microsoft Windows operating systems are supported including Windows Embedded versions and Windows CE. Linux support has been included in 2.6.31 kernels and later so the driver is built-in. Also, Mac OS X is supported.

2.1 Windows 7 Driver Installation

You're in luck! FTDI has released fully qualified WHQL drivers available through Microsoft.

Who cares? What does this mean?

The latest Microsoft certified drivers will be downloaded and installed automatically by Windows 7 when you plug in the USB-485 converter! The following screen capture shows the Windows 7 driver installation dialog in action. Drivers for both x86 (32-bit) and x64 (64-bit) are automatically installed.

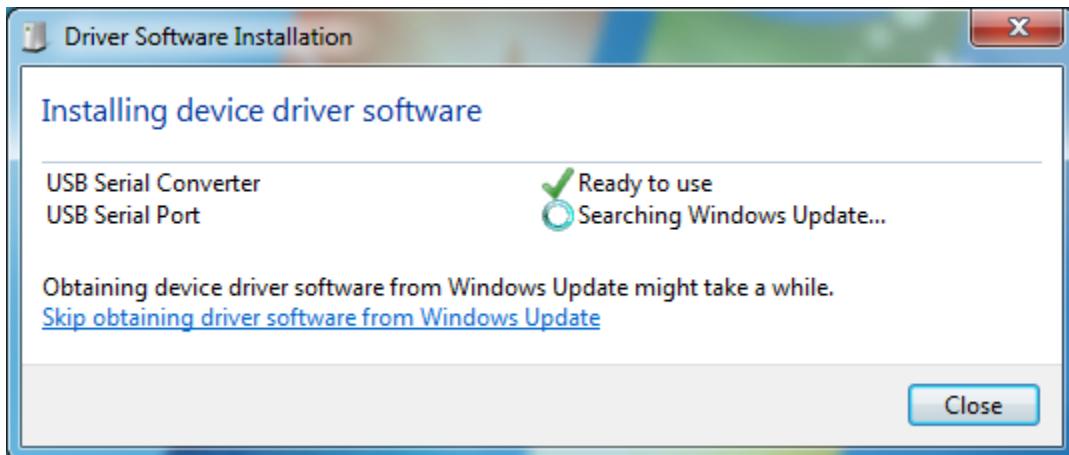


Figure 2: Windows 7 Automatic Driver Install

As you can see from the dialog windows above and below, there are actually two drivers that are loaded for the USB-485 converter (i.e., FTDI FT232R chip): 1) the USB Serial Converter driver, and 2) the USB Serial Port driver (which is the virtual comport driver VCP).

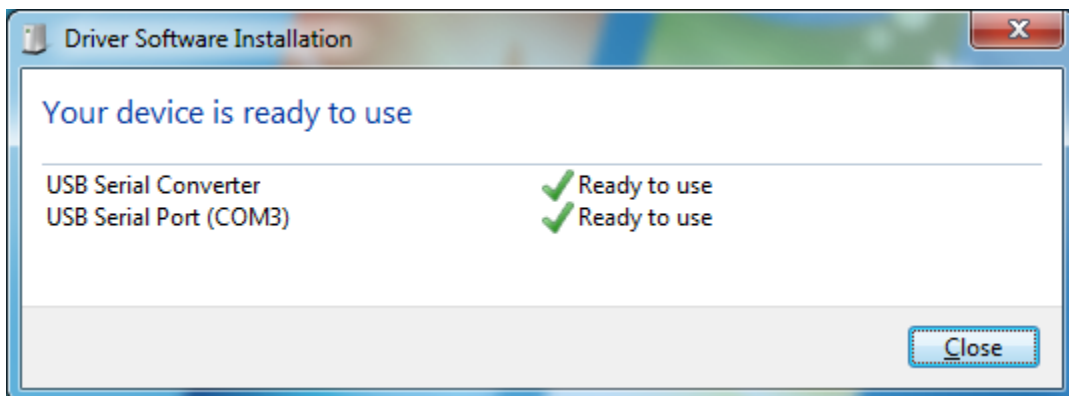


Figure 3: Windows 7 Driver Installation Completed

“Windows Update” retrieves the latest driver updates directly from Microsoft.

What if my computer is not connected to the Internet?

Are you living in a cave? Seriously though, we understand that there will be time when a computer cannot be connected directly to the internet. The drivers still need to be obtained through the internet, but that can be installed from a CD or USB thumb drive. Just follow the Windows XP instructions below.

2.2 Windows XP Driver Installation

The easiest way to install the FTDI VCP drivers for Windows XP is to download the “setup executable” version from the FTDI website, then launch the executable which installs the driver.

Here are the steps to load the FTDI VCP driver “setup executable”:

- Go to the FTDI website and navigate to the VCP Drivers page
 - <http://www.ftdichip.com/Drivers/VCP.htm>
- Download the Windows “setup executable”

USB-485 User Manual

- http://www.ftdichip.com/Drivers/CDM/CDM20814_Setup.exe
- The exact file name will change as FTDI releases new versions
- Save the file on your hard drive
- Launch the setup executable previously saved
- Attach the USB-485 converter. It should function immediately after the driver automatically loads (since it was previously installed when the “setup executable” was launched).



Figure 4: Windows XP FTDI Setup EXE Launch

When you see the MS-DOS command window shown below, you know the FTDI “setup executable” ran.

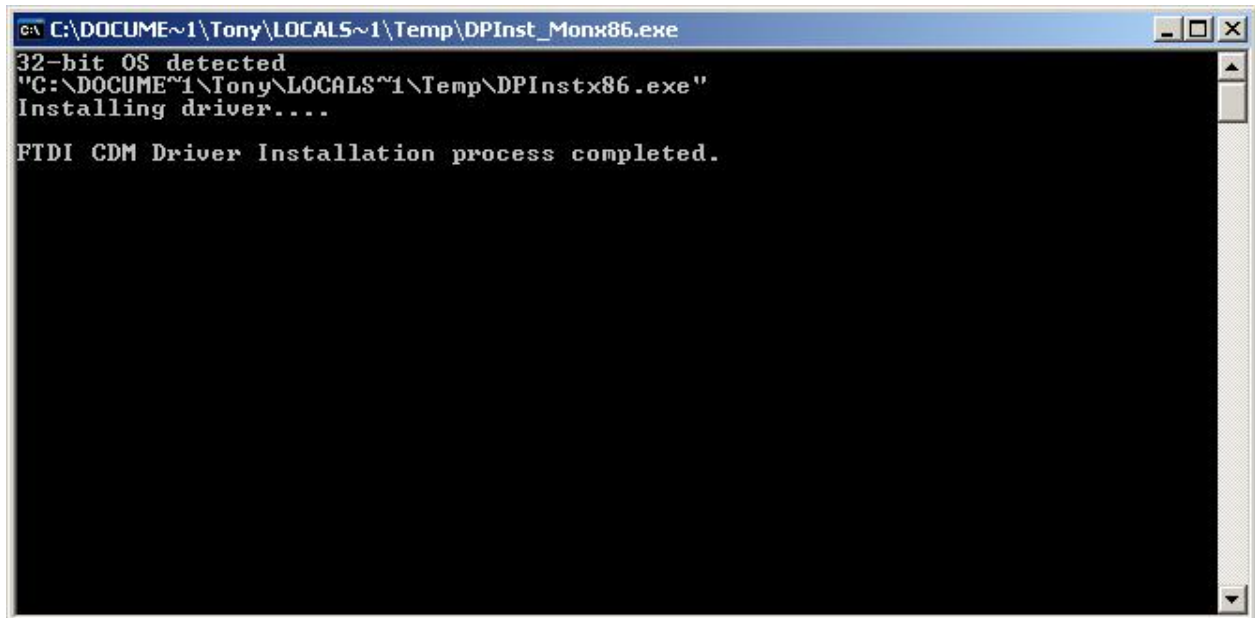


Figure 5: FTDI setup executable MS-DOS window

USB-485 User Manual

Once the setup executable has been successfully executed, you can now plug in the USB-485 converter and the driver will be automatically (and silently) installed.

2.2.1 Windows XP Manual Driver Installation

You can also download the driver package from FTDI, extract the driver to a location of your choosing, then select “Install from a list or specific location (Advanced)” from the Hardware Wizard dialog when plugging in the USB-485 converter for the first time and selecting the directory where the drivers were extracted earlier.



Figure 6: Windows XP New Hardware Wizard

More information and step-by-step instructions can be found at FTDI website using the following URL:

<http://www.ftdichip.com/Support/Documents/InstallGuides.htm>

2.3 Increasing Comport Numbers (Windows)

If you use several different USB-485 converters or other products with the FTDI FT232R chip in it, you may notice the phenomenon of increasing comport numbers. The issue of increasing comport numbers is related to how many new and unique USB-485 devices that have been plugged into a computer system. Windows will assign a new comport number each time a new USB-485 (or a new FTDI FT232R USB/UART chip) is plugged into the system.

Since each USB-485 (and FT232R chip) has a unique serial number, Windows assigns a new comport number to it when it is plugged into the computer to create a permanent association between USB

USB-485 User Manual

device and comport number. In the example below, the USB-485 converter was assigned COM6 even though there are no other USB-485 or RS-232 comport devices currently plugged into the computer.

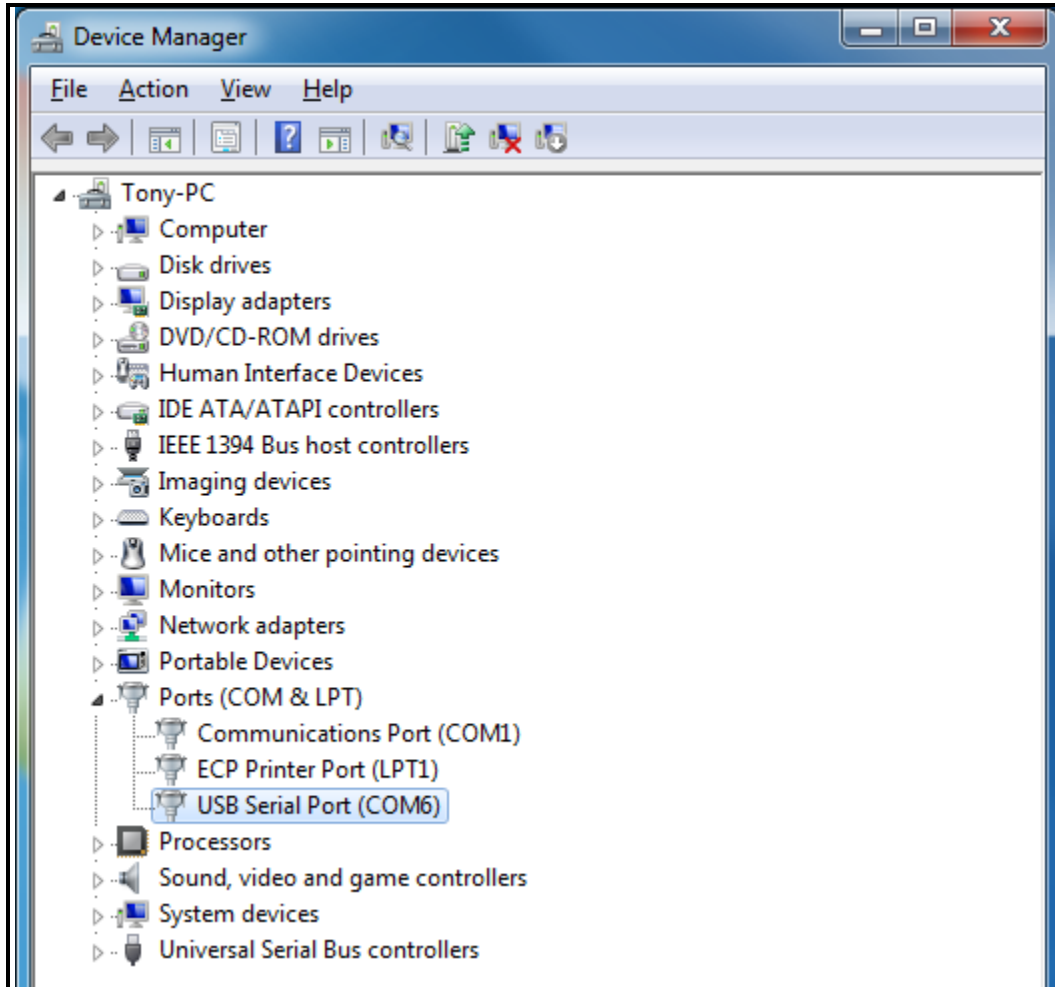


Figure 7: Increasing comport numbers (COM6)

Device manager can be launched by typing **DEVMGMT.MSC** into the Windows run/start launch box. The device manager can be reached via the Windows Control Panel as well.

The issue of increasing comport numbers can be circumvented by uninstalling the USB-485 (or FT232R) device before removing it. This is accomplished by right clicking on "USB Serial Port (COM6)" and selecting "Uninstall". Once it is uninstalled, the comport number can then be reused by another device.

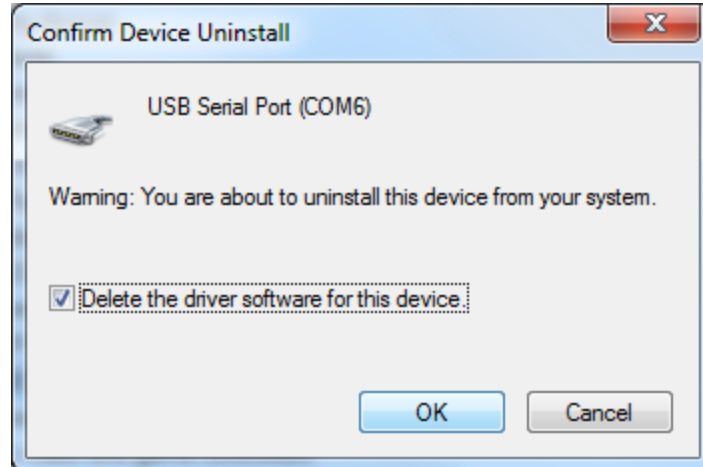


Figure 8: Uninstall comport to release assigned number

There is also another method to remove the comport numbers through a manual registry edit process. Please see [Comport Number Registry Fix](#) later in this manual.

2.4 Other Operating Systems (Linux, Mac OS, Embedded Windows, Windows, etc.)

Some operating systems like Linux have the FTDI drivers built right into the kernel. In that case, you should be able to plug it in and you're off and running immediately without any driver installation steps.

If you need support for other operating systems, please visit the FTDI website at:

<http://www.ftdichip.com/Support/Documents/InstallGuides.htm>

<http://www.ftdichip.com/Drivers/VCP.htm>

3 Operation

The USB-485 converter is very simple to use:

- Plug the USB-485 into a PC or Laptop via a standard USB A-B cable
- Load the drivers (exact steps dependent on the OS running on the PC or laptop)
- Wire the RS-485 A/B communication lines to the RS-485 device network
- Use it like a standard serial RS-232 comport that handles serial data from 300 to 3M baud

It's fully automatic and will handle the RS-485 multi-drop drive enable for you as well as automatically adjust to any baud rate to which you configure the comport.

3.1 USB Cable

The USB-485 uses the standard USB B connector and connects to a PC or Laptop with the common USB A-B cable. See the pictures of the connector used by the USB-485 converter and the USB cable below



Almost any standard USB A-B cable can be used since the device runs are USB Full Speed (12 Mbps).

3.2 RS-485 Wiring

RS-485 devices are typically wired in a daisy chain fashion where all devices on the RS-485 network backbone share the same RS-485 A and B data lines.



Figure 9: RS-485 Connection Terminals

The **SHLD** (cable shield) terminal connection is connected to electrical ground through a 10 ohm resistor and is designed to handle the cable shield. In some cases, the RS-485 cable may have a combined ground and shield connection through a braided shield or single drain wire. Depending on the environment and electrical considerations, better communications noise performance may be realized by using **GND** to connect the shield rather than **SHLD**, however we always suggest using the **SHLD** connection whenever possible.

Ground loops can be a problem if there is a voltage difference in the grounding of different RS-485 devices connected together. In that case we suggest using the Integrity Instruments optically isolated USB to RS-485 converter (part number USB-485I).

3.3 RS-485 Cable

It is imperative that the RS-485 cable be twisted pair and at least 24 AWG stranded wire. Unshielded cable can be used for shorter runs (less than 50 feet), but it is always best to use high quality shielded cable to ensure solid RS-485 signal integrity.

We suggest of the following shielded cable from Belden:

- Belden 9841 (24 AWG) used for most RS-485 installations
- Belden 9463 (20 AWG) used for longer cable runs in electrically noisy environments

USB-485 User Manual

3.4 LED Indicators

Three different LED indicator lights are present on the USB-485 converter. Their color and meaning is listed in the table below.

Table 1: LED Indicators

LED Color	Meaning
GREEN	Receive RS-485 data
RED	Transmit RS-485 data
YELLOW	Unit power on (from USB)
ALL ON CONTINUOUSLY	USB bus is disconnected from the PC/laptop, it is powered off, or in suspend mode

The LED indicators for RS-485 Transmit and Receive are high-efficiency clear lens LED's that will blink briefly when RS-485 data is transferred. They have a narrow field of light, but are bright. The LED indicator for Power is on continuously as long as there is power available on the USB bus.



Figure 10: LED indicators (left to right) – RX | TX | PWR

Receive: When data is being received on the RS-485 line, the **GREEN** LED will flash on.

Transmit: When data is being transmitted on the RS-485 lines, the **RED LED** will flash on.

Power: When USB power is available, the **YELLOW** LED will be on continuously.

Note: If the USB-485 converter is connected to a powered USB hub, **ALL** three LED indicators will be **ON** when the PC/Laptop is powered down, thus indicating the USB bus is not operating.

3.5 Termination Resistor

USB-485 User Manual

A termination resistor of 120 ohms can be enabled by simply using a jumper shunt on the JP1 pins positioned next to the terminal strip. When the jumper shunt is installed (shown BELOW), the 120 Ω termination resistor is enabled.

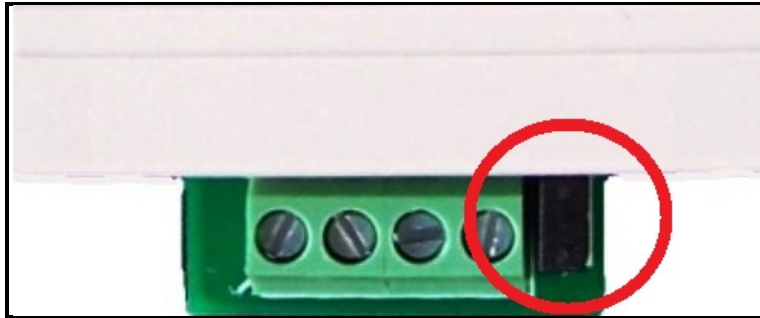


Figure 11: Termination resistor jumper (installed)

It is important that the first and last nodes each end of the RS-485 cable be terminated using a 120 ohm resistor, especially for longer cable runs.

3.6 Using EZTerm

Ok, we got sick of dealing with programs like Hyper Terminal, so we wrote our own EzTerminal program. You can download EZTerm from our website at: <http://www.rs-485.com/downloads.asp>

The nice thing about EZTerm is that you can reconfigure the comport settings on the fly, capture entire serial terminal sessions, display data in raw hexadecimal mode, and the transmit and receive data is color coded so you can better understand what data was sent by the PC and what data was received.

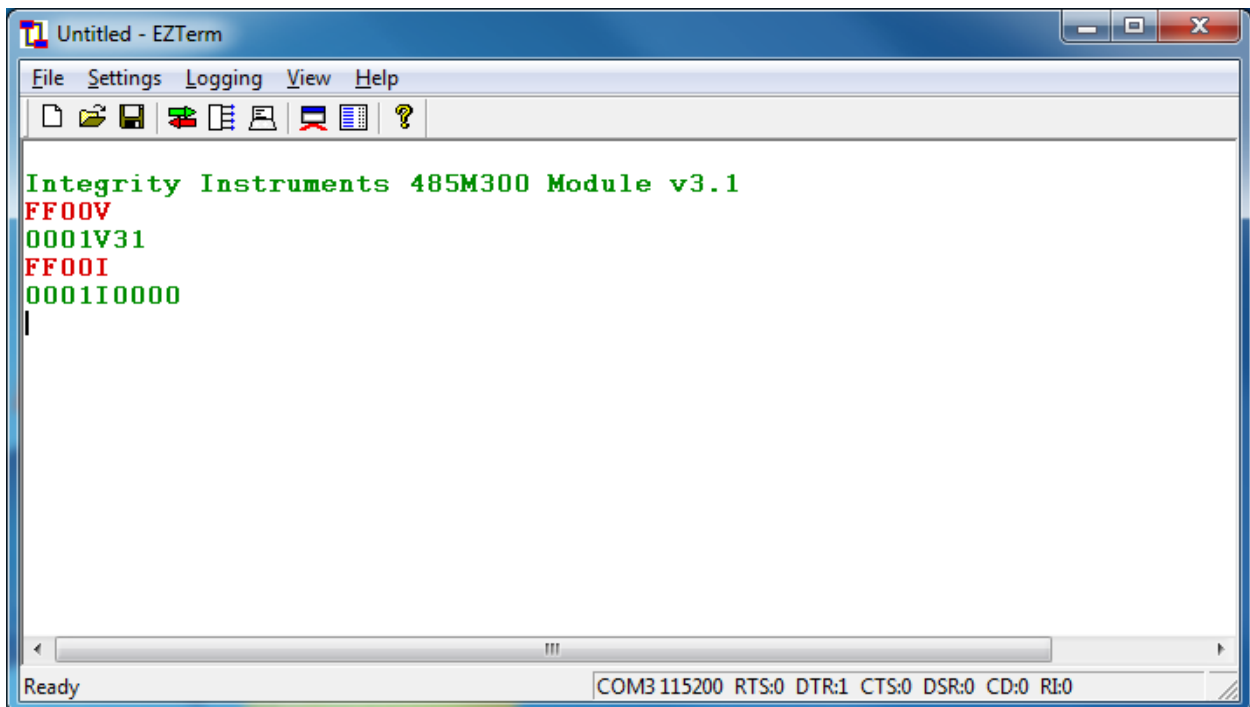


Figure 12: EZTerm used with USB-485 protocol converter

USB-485 User Manual

In the example above, the USB-485 converter was used to communicate with our 485M300 RS-485 data acquisition module. Data in **GREEN** was received by the PC through the USB-485 (sent by the 485M300) while data in **RED** was transmitted by the PC through the USB-485 protocol converter to the 485M300.

4 Specifications

Please see the USB-485 converter specifications table below:

Table 2: USB-485 Converter Specifications

Specification	Value
Power Consumption	< 90 ma typical @ 5V powered from USB bus 250 ma max. @ 5V (RS-485 drives into a dead short)
USB communications	USB 2.0 compatible Full Speed (12 Mbps)
RS-485 baud rate	300bps to 3Mbps (depends on the device driver for the specific operating system used) Windows 7 = 921600bps
Operating Temperature Range	-40°C to 85°C
Windows OS Support	Legacy: Windows 98/98SE, 2K, and 2K3 Windows XP x86 and x64 Windows Vista x86 and c64 Windows Server 2008 Windows 7 x86 and x64
Embedded Windows Support	Windows XP Embedded Windows CE 4.2, 5.0, and 6.0
Linux OS Support	2.4 and greater
Mac OS Support	Mac OS 8/9, OS-X

4.1 Electrical Protection Measures

There are several technical measures built into the USB-485 designed to protect the computer equipment connected to the device as well as the USB-485 converter itself.

Table 3: USB-485 Electrical Protection

Electrical Protection Measures
Transient suppression on USB communication lines D+/D- and USB power VBUS <i>TVS avalanche diode (Little fuse SP0503BAHTG)</i>
Transient suppression on the RS-485 data communication lines A/B <i>TVS avalanche diode (Little fuse SP0502BAHTG)</i>
Current/voltage limiting resistors on RS-485 data communication lines A/B <i>These 10 ohm resistors also act as fuses if there is a catastrophic fault on the RS-485 data lines such as 110 VAC bridging or short</i>
Resettable fuse on USB power line VBUS limits current to the USB-485 at 500 ma

More information and details can be found on the USB-485 schematic online. See our website at: <http://www.rs-485.com/>

5 Comport Number Registry Fix

If you're lucky enough to use dozens of different USB-485 converters on the same machine, you may have noticed that each time a new USB-485 converter (or, in fact, any device using the FTDI FT232R chip), the comport number continues to increase, even though you may only have one USB-485 currently connected to the PC. A progression of comport numbers such as COM3, COM4, COM5, etc. keep building as new USB-485 converters are introduced.

The phenomenon is a simple artifact of Windows associating a specific USB-485 (or FTDI FT232R) with a specific comport number. Each FTDI FT232R gets a unique serial number which is used by Windows to link the COMx number to it. No matter what USB port or hub it is currently plugged into, it gets the same COMx number. It is very convenient, unless you keep introducing new USB-485 (or FTDI FT232R chips), but want to use the lower comport numbers.

There are two ways to solve this issue and release used comport numbers:

1. Uninstall the comport when you're done using it (see the previous section)
2. Manually edit the comport database maintained by Windows

Performing the fix is relatively simply. Launch the Windows registry editor by typing **REGEDIT** in the Windows start/run box, then navigate to the comport data base with the following key name:

Key Name:

HKEY_LOCAL_MACHINE\SYSTEM\CurrentControlSet\Control\COM Name Arbiter

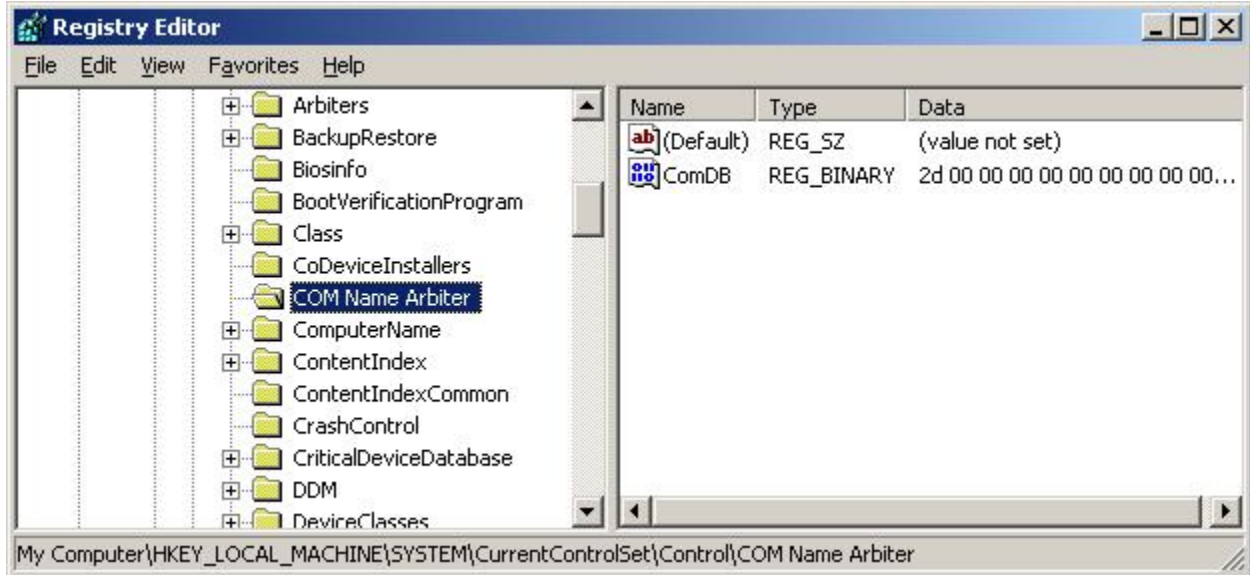


Figure 13: REGEDIT "COM Name Arbiter" Key Name

Essentially **ComDB** is a bit vector containing 256 bits (32 bytes) where bit:0 = COM1, bit:1 = COM2, bit:2 = COM3 ... bit:255 = COM256 (maximum comport number in Windows) If a comport number is in use, the corresponding bit is set to 1.

USB-485 User Manual

In this example, **ComDB** is 0x2D = 00101101 binary where COM1, COM3, COM4, and COM6 are all allocated for use and COM2 and COM5 are not allocated. However, when a new USB-485 is plugged in COM7 will be used (as opposed to claiming the unused COM5 bit 4).

To free a comport number, simply delete the corresponding bit in binary value **ComDB**. The value **ComDB** can be edited by either double clicking on it or selecting the Edit menu in REGEDIT.

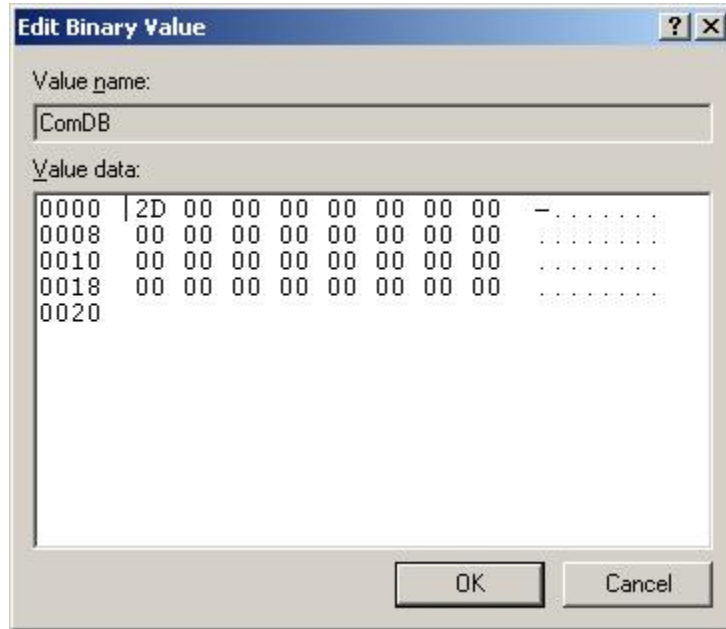


Figure 14: ComDB value COM1, COM3, COM4 and COM6 are allocated

After removing the unused comport numbers, only COM1 remains (binary value 0x01);

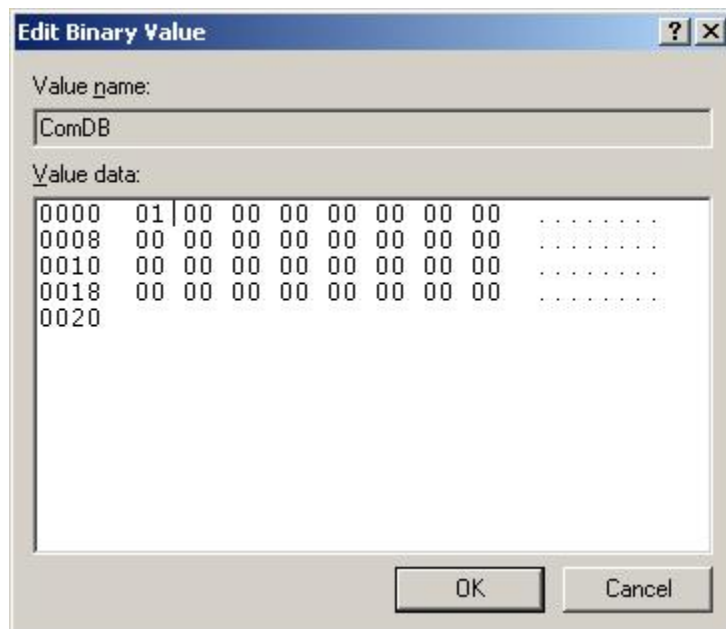


Figure 15: ComDB value only COM1 remains (bit0)

USB-485 User Manual

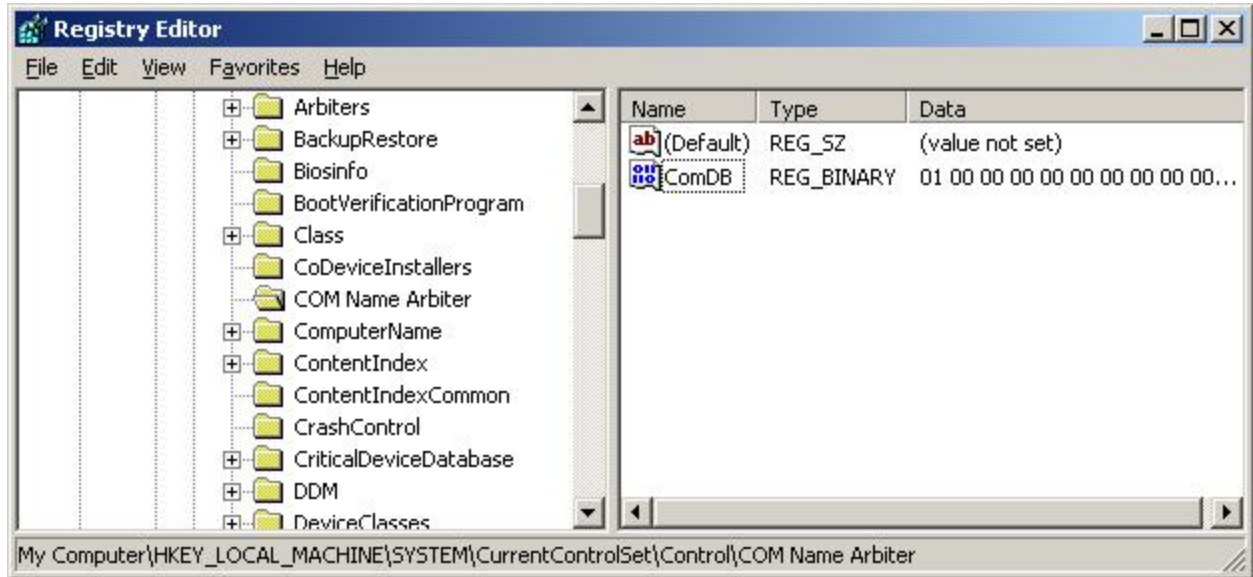


Figure 16: Corrected "COM Name Arbiter" with COM1 remaining

In this example, the next time a USB-485 converter is plugged in, the OS will use COM3 for the new VCP comport number. Note that COM1 and COM2 are reserved for the motherboard comport numbers.

Note: This is a manual registry edit operation which can be dangerous and possibly leave your computer unbootable if incorrect modifications are made to key values other than **ComDB**